

MarkWare™ 3.9 Facility Identification Software



MarkWare, the companion software for use with Brady printing systems, is a powerful and effective tool for industrial sign creation. It includes over 1,000 symbols, pictograms and templates, making it quick and easy for you to create your own signs and labels. From your PC you can create messages, symbols, pictograms, informative and instructive signage effectively. Make your workplace safe!

MarkWare handles:

- Monochrome printing up to 1m in length (BMP71) on adhesive banner rolls
- Monochrome printing up to 3m in length (BBP31) on adhesive banner rolls
- Multicolour printing up to 1m in length (GlobalMark Multicolor)
- Multicolour printing up to 5m in length (PowerMark) on adhesive banner rolls
- Letter & symbol cut-outs (GlobalMark Color & Cut)
- Printing + cutting on the same label (GlobalMark Color & Cut)
- Printing on die-cut labels (MiniMark)
- Printing on a variety of media ranging in width from 13mm to 250mm, according to the Brady system used

Choosing MarkWare means choosing simplicity and effectiveness

Main MarkWare characteristics

- Markware offers the creation of CLP Pipe markers in accordance with the latest legislation.
- Reverse printing / Puzzle printing / Object rotation / Data import (Excel®, Access®, Dbase®, Text®, FoxPro®, Lotus®, Paradox® formats) / Import of drawings, pictograms and diagrams (BMP, DIB, TIF, JPG, WMF, PNG, PCX, PCT, RAS and EPS formats).
- MarkWare also employs all the basic functions of Windows® applications for more intuitive use (copy/paste within the application, print preview, justify, superscript, bold, italics, underline, borders, etc.)
- Compatible with Windows® XP Professional SP3, Windows® 2000 SP4 and Windows Vista™
- Supports new European CLP (Classification, Labelling and Packaging) Hazardous Substances Identification labels containing GHS graphics (Diamond, Square and PIC) and ADR graphics (now also square and with new mark "Dangerous for the environment").
- Fonts: All True Type fonts installed on a PC.
- 15 Bar code protocols: Codabar, code 128 Auto, code 128 A, code 128 B, code 128 C, code 39, EAN/JAN-13, EAN-JAN-18, Extended code 39, HIBC, Interleaved 2/5, UPCA, UPCE 11 Digit, UPCE-0 6 digit, UPCE-1 6 digit
- 19 languages on 1 CD: Bulgarian, Czech, Danish, Dutch, English, Finnish, French, German, Hungarian, Italian, Norwegian, Polish, Portuguese, Romanian, Russian, Slovakian, Slovenian, Spanish, Swedish

MarkWare™		Client Advantages
Windows®-compatible print driver included (Windows® XP Professional SP3, Windows® 2000 SP4 and Vista™ ultimate SP1).	→	No downloads necessary.
Windows® print driver adds the Brady printer to your printer list.	→	Authorises printing directly from other software such as drawing and other widely used creative programs (the margins must be adjusted considering that MarkWare is designed to work with Brady printers using banner rolls).
No dongle drivers.	→	Hassle free ease of use.
Reinstallation possible.	→	In case of problems, multiple installations on one PC are possible at no extra cost. There is no loss of license in cases of disk failure, OS modification, updating computer equipment, etc.
MarkWare employs all the basic functions of Windows® applications (copy/paste within the application print preview, etc ...).	→	Facilitates quick initiation and mastery of the software.
Complies with safety standards.	→	Complies to current legislative guidelines for safety signage and identification.
MarkWare works in network environments through local installation (MarkWare is not an application for installation on a network server).	→	Local application does not create interference in the proper function of your network. <i>Please note: where a network is in place, the installation of MarkWare should be done using the local administrator profile of the PC where the software is to be installed (please consult your IT support service).</i>
Very user-friendly application.	→	Advanced functions allow quick label creation ("align objects", "group objects", foreground/background, zoom, rotation...).
Template designer.	→	Quick and easy creation of personalised label templates.



Intuitive software that understands you.

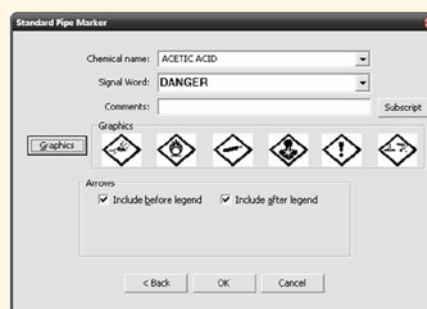
Multiple Applications

- Laboratory pictograms for signmaking
- Labels and safety signage (pictograms and/or text)
- Information and instructive signs (including evacuation plans)
- Labels for safety procedures (identification of valves and switches)
- Labels/tags for machine instructions (user directions, lockout-tagout, technical diagrams)
- Pipe markers
- Labels for hazardous substance identification (CLP/GHS, HSID and RTK)
- Labels for hazardous transport (ADR)
- Maintenance labels (servicing instructions, repair instructions)
- Management of fixed assets
- Labels for logistical signage (storage, warehousing, shipping, bar codes)

Minimal Requirements

- Processor: 400 MHz or equivalent
- Operating System: Microsoft Windows® 2000 (SP4), XP PRO (SP3), or Vista Ultimate (SP1)
- Minimum 96 MB of RAM (256 MB recommended)
- CD-Rom drive
- Up to 500 MB of available hard disk space (for a complete installation) may be required.
- Minimum display resolution of 640 x 480 at 256 colours (Recommended 1024 x 768 High Colour, 32 bit)
- Print drivers for all printers

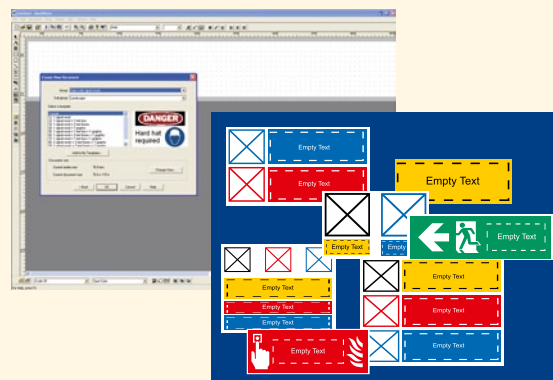
	Order Reference	Description
Full Version	710669	ASSY MARKWARE EU V3.9
Upgrade CD-Rom	710770	UPGRADE MW EU V3.9
Online Upgrade	—	Free of charge via www.bradyeurope.com



Create CLP Pipe markers in a few clicks. Simply start by selecting the "CLP Pipe Markers" application and fill in the 3 dialog windows of the wizard. Once finished, you are ready to print your pipe marker.



Represents the CLP symbols in accordance with current legislation.



Includes label template designs. The size of the template adjusts automatically to the size of the installed adhesive roll, regardless of width.

Brady Europe Locations

Africa	+971 4881 2524	Italy	+39 02 26 00 00 22
Benelux	+32 (0) 52 45 78 11	Middle East	+971 4881 2524
Denmark	+45 66 14 44 00	Norway	+47 70 13 40 00
Central & Eastern Europe	+421 2 3300 4800	Spain & Portugal	+34 900 902 993
France	+33 (0) 3 20 76 94 48	Sweden	+46 (0) 8 590 057 30
Germany	+49 (0) 6103 7598 660	Turkey	+90 212 264 02 20
Hungary	+36 23 500 275	UK & Ireland	+44 (0) 1295 228 288

Your Brady Distributor